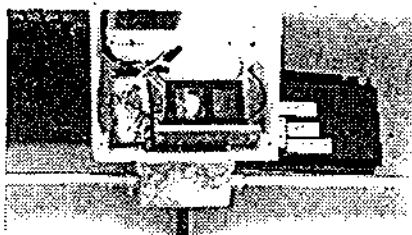


INSTRUCTION SHEET

IMPORTANT SAFETY INFORMATION • READ AND FOLLOW ALL SAFETY INSTRUCTIONS. Follow Label Information and Instructions concerning Wet or Damp Locations, installation near combustible insulation or building materials, and proper lamping. • Do not install in areas subject to combustible vapors or gases. • Before wiring to power supply and during servicing or relamping, turn off power at fuse or circuit breaker. All servicing or relamping must be performed by qualified service personnel. • Product must be grounded to avoid potential electric shock or other potential hazard. • Product must be mounted in locations and at heights and in a manner consistent with its intended use, and in compliance with the National Electrical Code and local codes. • The use of accessory equipment not recommended by the manufacturer or installed contrary to instructions may cause an unsafe condition. • Do not block light emanating from product in whole or part, as this may cause an unsafe condition. • Do not allow items such as drapes, curtains, screens or the like to come into contact with the product or to block light from the product, as this may cause an unsafe condition.

Notice: These fixtures intended and designed for wall recessed mounting where proper fixture orientation is vertical (upright) with the junction box at the bottom and light directed to the floor or ground level.

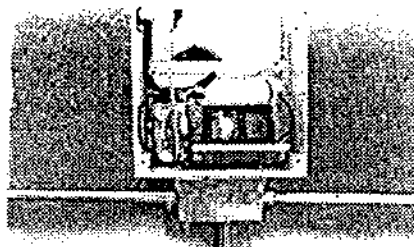
1. Install fixture in wall using the two brackets mounted on each side of the housing. These brackets can be adjusted so that the housing opening is recessed or slightly protruding from the mounting surface. Do not mount the housing recessed from the mounting surface, this will reduce the faceplate gasketing effectiveness. For models marked and to be used in poured concrete, additional corrosion protection (e.g. asphaltum or equivalent) is required on the recessed portions of the housing. Failure to properly protect unit against corrosion may void fixture warranty.
2. Install supply conduit and wires, using the junction box supplied on the bottom of the fixture, in accordance with the National Electrical Code (ANSI/NFPA 70).



CAUTION

If through branch circuit conductors are pulled through the junction box, please use extreme caution so as not to damage or disconnect thermal protection wiring. Do not modify or defeat the thermal protection circuit designed into the fixture.

3. Remove the faceplate with a 3/16" allen wrench. Two 1/4-20 screws hold this on to the housing.
4. Remove the junction box cover from the inside of the housing. Loosen the two screws retaining the cover plate, do not remove (1/4" open end wrench required). Slide the cover away to gain access to the junction box.



5. Inside the junction box are marked leads that are necessary for proper hookup of supply leads. Note: Two types of ballast are supplied with these fixtures, single voltage and dual voltage. Determine the type that you have by looking at the ratings on the ballast compartment cover. If you have a single voltage unit, continue to step 6. If you have a dual voltage unit, follow the instructions on the back of this page.

6. For single voltage units: Locate the wires in the junction box marked "COM" and the other marked with the supply voltage indicated on the ratings label. Connect your supply wires to these input wires. (Some models have the "COM" composed of two single wires marked together with "COM", use both of these to connect to your neutral. Reinstall the junction box cover after carefully inserting all wiring back into the junction box. The junction box cover must be reinstalled for proper operation.

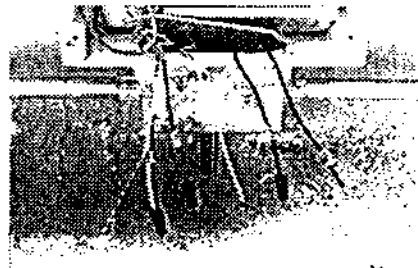


7. Replace ballast compartment cover and lamp fixture.

8. Replace faceplate. Make sure the two 1/4-20 allen head screws are tight and evenly torqued. Check that the sealing gasket is evenly seated all around.

DUAL VOLTAGE BALLASTS:

Inside the junction box, locate wires marked "120", "277", "COM", "LINE", and a blue wire capped off with a wirenut. Notice that the "120" and the "277" are also capped off. Uncap the blue wire and either the "120" or the "277" depending on supply voltage you are providing the fixture. Connect and wirenut the blue, and the wire with the proper voltage together. The other, unused wire must be left capped.



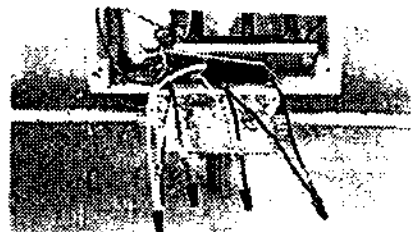
Connect your supply leads to wires marked "COM" and "LINE". Make sure all connections are tight and secure.

Carefully install all wiring back into the junction box and replace the junction box cover with its two retaining screws.

Replace the ballast compartment cover (4 screws). Lamp fixture (see lamp ratings for type and size).

Install faceplate with the two 1/4-20 allen head screws provided. Make sure the gasket is properly seated and the screws are evenly torqued.

CAUTION: If through branch circuit conductors are pulled through the junction box, please use extreme caution so as not to damage or disconnect thermal protection wiring. Do not modify or defeat the thermal protection circuit designed into the fixture.



Instruction Sheet

Instruction Sheet No.....417-1187
Part No. 30532
INSTALLATION INSTRUCTIONS
93147 SERIES

IMPORTANT SAFETY INFORMATION • READ AND FOLLOW ALL SAFETY INSTRUCTIONS. Follow Label Information and Instructions concerning Wet or Damp Locations, installation near combustible insulation or building materials, and proper lamping. • Do not install in areas subject to combustible vapors or gases. • Before wiring to power supply and during servicing or relamping, turn off power at fuse or circuit breaker. **All servicing or relamping must be performed by qualified service personnel.** • Product must be grounded to avoid potential electric shock or other potential hazard. • Product must be mounted in locations and at heights and in a manner consistent with its intended use, and in compliance with the National Electrical Code and local codes. • The use of accessory equipment not recommended by the manufacturer or installed contrary to instructions may cause an unsafe condition. • Do not block light emanating from product in whole or part, as this may cause an unsafe condition. • Do not allow items such as drapes, curtains, screens or the like to come into contact with the product or to block light from the product, as this may cause an unsafe condition.

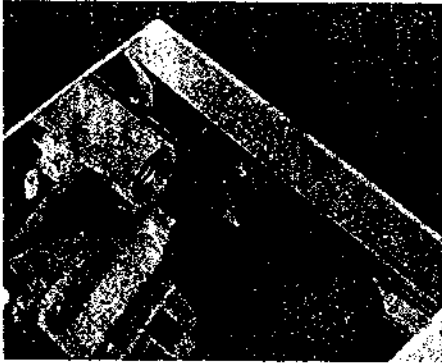
Installation of socket mounting bracket for asymmetric distribution. (NOTE: Bracket may be installed before or after fixture installation.)

To shift light distribution to the left (as you face the fixture), follow instructions 1, 2, 1L, 2L.

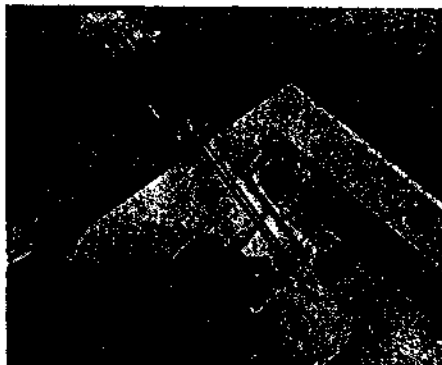
To shift light distribution to the right (as you face the fixture), follow instructions 1, 2, 1R, 2R, 3R and 4R on reverse side of Instruction Sheet.

When installed in concrete pour or mortar and in a situation where direct water exposure is frequent, the concrete or mortar is to be suitably treated with a water sealing or repelling agent to insure that the fixture housing does not remain continuously wet.

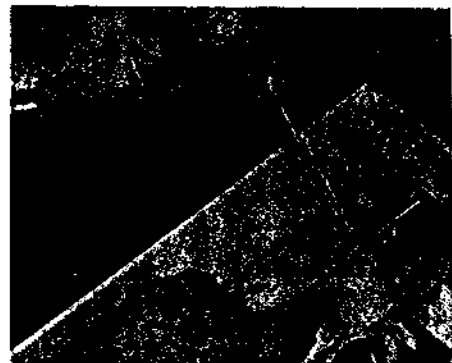
LEFT DISTRIBUTION



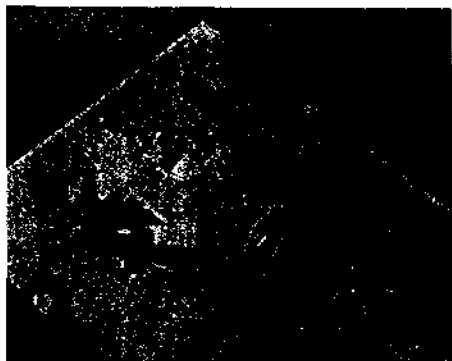
1. Loosen screw above socket about three turns. Remove screw below socket.



- 1L. Mount socket and insulating disc to bracket (supplied).

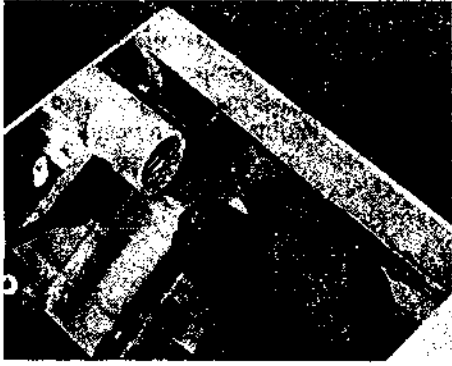


2. Remove socket and insulating disc from reflective mounting plate.

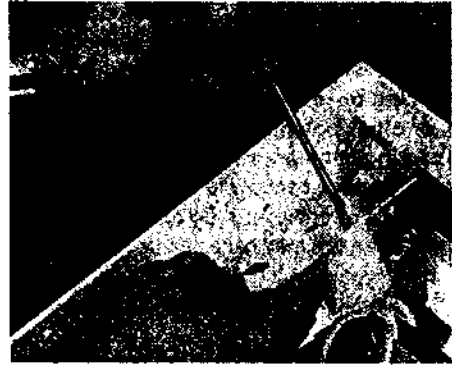


- 2L. Return reflective mounting plate to its original position. Slide one leg of mounting bracket under the head of the upper screw. Replace lower screw and tighten upper screw. (NOTE: If additional socket wire is required, loosen ballast cover screw nearest feed-thru area and pull wire as needed.)

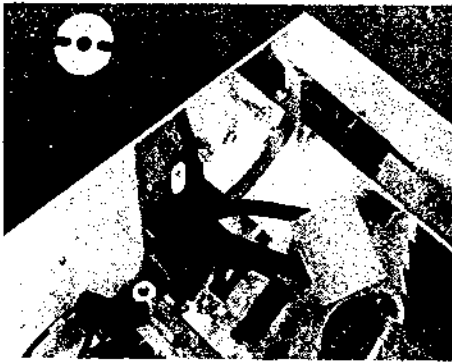
Presco-lite



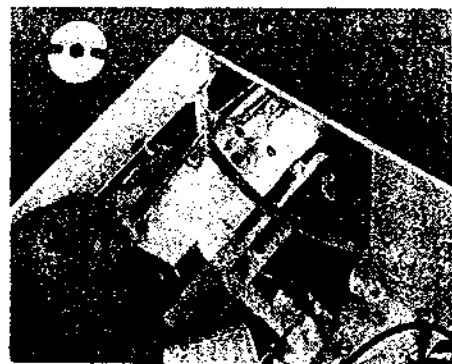
1. Loosen screw above socket about three turns. Remove screw below socket.



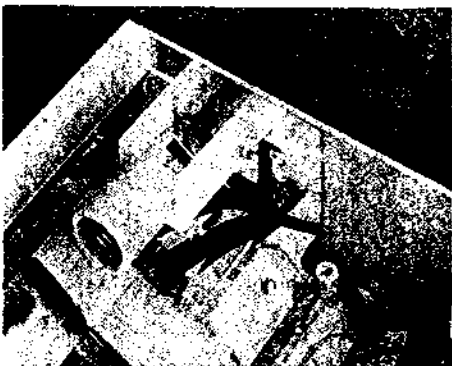
2. Remove socket and insulating disc from reflective mounting plate.



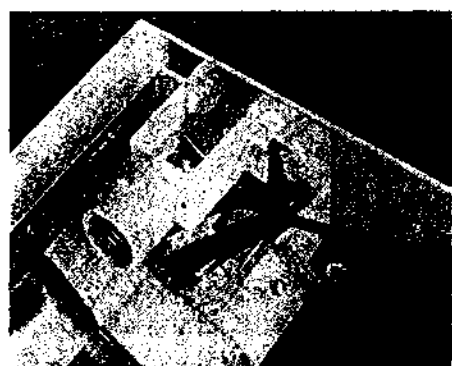
1R. Loosen ballast cover screws. Lift and shift ballast cover to remove. Return reflective mounting plate to its original position. Replace lower screw and tighten upper screw.



2R. Loosen upper screw about three turns and remove lower screw from the opposite reflective mounting plate.



3R. Mount socket and insulating disc to bracket (supplied). Reroute socket wire to the opposite side of the housing. Slide one leg of the mounting bracket under the head of the upper screw. Replace lower screw and tighten upper screw.



4R. Replace ballast cover.

Prescolite