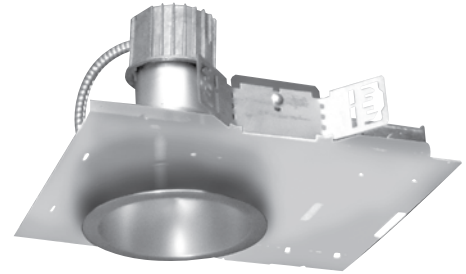


Building owners now have the opportunity to register Osram Sylvania ballast and lamp system installations as part of the Quick 60+ program, which offers participants a 5-year Limited Warranty on the ballast and a 1-year Limited Warranty on the lamp.

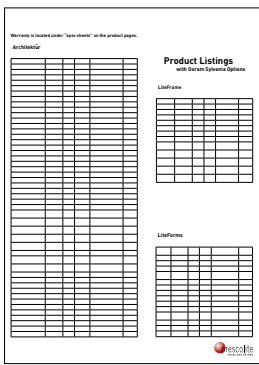
This summer, Prescolite announced that Osram ballasts were available as standard options with Architektür, LiteForms and LiteFrame products. Osram Sylvania does an outstanding job in working with the specification community and building owners in generating demand for their product – and now we’re pleased to announce the availability of their Quick 60+ program.

Compare lighting system warranties and you’ll see that their Quick 60+ warranty offers:

- Better Coverage
- More Service Options
- Peace of Mind



Quick 60+ Warranty Program now available



The QUICK 60+ warranty is automatically activated after Osram Sylvania receives a completed QUICK 60+ warranty registration form from the building owner within 30 days after installation. All Prescolite housings with Osram ballasts ship with the registration form or, visit www.prescolite.com to download spec sheets, a listing of qualifying products, as well as warranty copy and registration forms.

With the Quick 60+ Warranty Program, Prescolite ensures a complete, Osram Sylvania ballast and lamp solution for specifiers and building owners. This expansion is one of many continuous efforts in Prescolite becoming the easiest company with which to do business.



Warranty is located under "spec sheets" on the product pages.

Architektür

Prescolite Catalog #	Wattage	# of Lamps	Lamp Type	Ballast Description	NAED #
CFCB6	13W	2	Quad	QTP 1/2X13CF/UNV	51818
CFCB6	18W	2	Quad	QTP 1/2X18CF/UNV	51823
CFCB6	26W	2	Quad	QTP 2X26CF/UNV	51833
CFCB6	26W	2	Quad	QTP 2X26CF/UNV	51833
CFCB8	13W	2	Twin	QTP 1/2X13CF/UNV	51818
CFCB8	18W	2	Quad	QTP 1/2X18CF/UNV	51823
CFCB8	26W	2	Quad	QTP 2X26CF/UNV	51833
CFCB832/842THEB	26/32W	2	Triple	QTP 2X26/32/42CF/UNV M	51843
CFCB832/842THEB	26W	2	Quad	QTP 2X26CF/UNV	51833
CFQ613EB	13W	1	Quad	QTP 1/2X13CF/UNV	51818
CFQ618EB	18W	1	Quad	QTP 1/2X18CF/UNV	51823
CFQ626EB	26W	2	Quad	QTP 2X26CF/UNV	51833
CFQ826EB	26W	2	Quad	QTP 2X26CF/UNV	51833
CFR6126EB	26W	2	Quad	QTP 2X26CF/UNV	51833
CFR613EB	13W	2	Twin	QTP 1/2X13CF/UNV	51818
CFR613QUEB	13W	2	Quad	QTP 1/2X13CF/UNV	51818
CFR618EB	18W	2	Quad	QTP 1/2X18CF/UNV	51823
CFR626EB	26W	2	Quad	QTP 2X26CF/UNV	51833
CFR8126UEB	26W	2	Quad	QTP 2X26CF/UNV	51833
CFR813EB	13W	2	Twin	QTP 1/2X13CF/UNV	51818
CFR813UEB	13W	2	Twin	QTP 1/2X13CF/UNV	51818
CFR813QUEB	13W	2	Quad	QTP 1/2X13CF/UNV	51818
CFR818UEB	18W	2	Quad	QTP 1/2X18CF/UNV	51823
CFR826UEB	26W	2	Quad	QTP 2X26CF/UNV	51833
CFT632EB	26W	2	Quad	QTP 2X26CF/UNV	51833
CFT632HEB	26W	2	Quad	QTP 2X26CF/UNV	51833
CFT832EB	26W	2	Quad	QTP 2X26CF/UNV	51833
CFT832HEB	26W	2	Quad	QTP 2X26CF/UNV	51833
CFT857EB	57W	1	Double Quad	QTP 2X26/32/42CF/UNV M	51843
CFT857HEB	57W	1	Double Quad	QTP 2X26/32/42CF/UNV M	51843
CFT870EB	70W	1	Double Quad	QTP 2X26/32/42CF/UNV M	51843
CFT970EB	70W	1	Double Quad	QTP 2X26/32/42CF/UNV M	51843
CFT970HEB	70W	1	Double Quad	QTP 2X26/32/42CF/UNV M	51843
CFTD832HEB	26/32/42W	2	Triple	QTP 2X26/32/42CF/UNV M	51843
CFTD957HEB	57W	2	Double Quad	QTP 2X26/32/42CF/UNV M	51843
CFTD970HEB	70W	2	Double Quad	QTP 2X26/32/42CF/UNV M	51843
CFTW2832EB	26/32/42W	2	Triple	QTP 2X26/32/42CF/UNV M	51843
CFTW632EB	26W	2	Quad	QTP 2X26CF/UNV	51833
CFTW832EB	26W	2	Quad	QTP 2X26CF/UNV	51833
CFW826EB	26W	2	Quad	QTP 2X26CF/UNV	51833
D413EB	13W	1	Quad	QTP 1/2X13CF/UNV	51818
D418EB	18W	1	Quad	QTP 1/2X18CF/UNV	51823
D413EB	13W	1	Triple	QTP 1/2X13CF/UNV	51818
D418EB	18W	1	Triple	QTP 1/2X18CF/UNV	51823
D432EB	26W	2	Quad	QTP 2X26CF/UNV	51833
D432EB	26W	2	Quad	QTP 2X26CF/UNV	51833
CFT932HEB	26/32/42W	2	Triple	QTP 2X26/32/42CF/UNV M	51843
CFR926EB	26W	2	Quad	QTP 2X26CF/UNV	51833

Product Listings with Osram Sylvania Options

LiteFrame

Prescolite Catalog #	Wattage	# of Lamps	Lamp Type	Ballast Description	NAED #
LF6CFH	13W	2	Twin	QTP 1/2X13CF/UNV	51818
LF6CFH	13W	2	Quad	QTP 1/2X13CF/UNV	51818
LF6CFH	18W	2	Quad	QTP 1/2X18CF/UNV	51823
LF6CFH	26W	2	Quad	QTP 2X26CF/UNV	51833
LF8CFH	13W	2	Twin	QTP 1/2X13CF/UNV	51818
LF8CFH	13W	2	Quad	QTP 1/2X13CF/UNV	51818
LF8CFH	18W	2	Quad	QTP 1/2X18CF/UNV	51818
LF8CFH	26W	2	Quad	QTP 1/2X18CF/UNV	51823
LF6CFV	26/32/42W	1	Triple	QTP 2X26/32/42CF/UNV M	51833
LF8CFV	26/32/42W	1	Triple	QTP 2X26/32/42CF/UNV M	51833
LF8CFH132EB	26/32/42W	1	Triple	QTP 2X26/32/42CF/UNV M	51833
LF8CFH232EB	26/32/42W	2	Triple	QTP 2X26/32/42CF/UNV M	51843
LF6CFH132EB	26/32/42W	1	Triple	QTP 2X26/32/42CF/UNV M	51833

LiteForms

Prescolite Catalog #	Wattage	# of Lamps	Lamp Type	Ballast Description	NAED #
CF10UD	26/32/42W	2	Triple	QTP 2X26/32/42CF/UNV M	51843
CF8	13W	1	Quad	QTP 1/2X13CF/UNV	51818
CF8	18W	1	Quad	QTP 1/2X18CF/UNV	51823
CF8	26W	1	Quad	QTP 2X26CF/UNV	51833
CF8	26/32/42W	1	Triple	QTP 2X26/32/42CF/UNV M	51833
CFF10	13W	2	Twin	QTP 1/2X13CF/UNV	51818
CFF10	18W	2	Quad	QTP 1/2X18CF/UNV	51823
CFF10	26W	2	Quad	QTP 2X26CF/UNV	51833
CFS10	13W	2	Twin	QTP 1/2X13CF/UNV	51818
CFS10	18W	2	Quad	QTP 1/2X18CF/UNV	51823
CFS10	26W	2	Quad	QTP 2X26CF/UNV	51833
CF_9	26/32/42W	2	Triple	QTP 2X26/32/42CF/UNV M	51843
CFSCB8	13W	2	Twin	QTP 1/2X13CF/UNV	51818
CFSCB8	18W	2	Quad	QTP 1/2X18CF/UNV	51823
CFSCB8	26W	2	Quad	QTP 2X26CF/UNV	51833

QUICK 60+®

Limited Warranty

Subject to change without notice.

The Heart of a Comprehensive System Service Program

Compare lighting system warranties – you'll see that our QUICK 60+ warranty offers better coverage, more service options and, more important, peace of mind.

Combination Lamp and Ballast System Limited Warranty

OSRAM SYLVANIA Products Inc. ("OSPI") warrants SYLVANIA lamps installed on QUICKTRONIC® ballasts to be free from defects in material and workmanship and to operate from the date of installation (or date of manufacture if installation date is not known or available) for the time periods and subject to the Terms and Conditions specified below. If

lamps fail to operate for the warranty period, OSPI will provide a free replacement lamp (but no labor allowance). If a QUICKTRONIC ballast fails to operate within the warranty period, OSPI will provide a free replacement ballast and labor allowance in accordance with the "Labor Options" set forth below.

System ^{3,4}	Lamp	Ballast Warranty Period ⁸	Lamp Warranty Period [*]
QUICKTRONIC® T8 ¹	OCTRON XPS®, XP & XP/SS ^{2,3}	60 mos.	36 mos.
QUICKTRONIC T8 ¹	OCTRON XP/XL & XP/XL/SS family	60 mos.	48 mos.
QUICKTRONIC T8 ¹	OCTRON family	60 mos.	30 mos.
QUICKTRONIC T8 High Ambient ^{1,9}	OCTRON XP, XP/SS ^{2,3}	36/60mos.@<90°/70°C	36 mos.
QUICKTRONIC 59	OCTRON FO96/XP, FO96/XP/SS	60 mos.	30 mos.
QUICKTRONIC 59	OCTRON FO96	60 mos.	24 mos.
QUICKTRONIC 86/T8HO High Ambient ¹	OCTRON FO96HO	36/60mos.@<90°/70°C	30 mos.
QUICKTRONIC 96IS/96HO & 40T12	N/A	60 mos.	N/A
QUICKTRONIC T5 ¹ , T5/HO ¹	PENTRON® Family	60 mos.	24 mos.
QUICKTRONIC 54T5HO ¹ High Ambient	PENTRON® FP54/HO, FP54/C/HO	36/60 mos.@<90°/70°C	36 mos.
QUICKTRONIC 54T5/HO ¹	PENTRON® FP54/HO, FP54/C/HO	60 mos.	36 mos.
QUICKTRONIC 54PHO & DL40	DULUX® FT55DL, FT40DL & FT40/28SS	60 mos.	12 mos.
QUICKTRONIC CF ¹	DULUX® D/E, T/E, T/E/IN, T/E/C	60 mos.	12 mos.
QUICKTRONIC FM	FM	24 mos.	6 mos.
QUICKTRONIC ICE ^{1,5}	ICETRON®	60 mos.	60 mos.
QUICKTRONIC MH ⁷	METALARC® Family ⁶ (7K-12K hrs. avg. rated life)	36/60 mos.	6 mos.
QUICKTRONIC MH ⁷	METALARC® Family ⁶ (15K-20K hrs. avg. rated life)	36/60 mos.	12 mos.

*NOTE: Fluorescent lamp warranty periods are based on a 3 hour minimum cycle, unless otherwise noted, with a maximum of 4000 hours per year.

Other operating cycles may affect warranty period. Lamp warranty can renew when installation is group relamped, contact OSRAM SYLVANIA for details.

¹ Occupancy sensor application, 15 minute/start minimum, allowed with QUICKTRONIC PROStart® and with QUICKTRONIC ICE ballasts.

² OCTRON SUPERSAVER® bipin lamps operate on Instant Start & PROStart (non-dimming) models only.

³ QUICKTRONIC, Professional Series and High Efficiency Series including all IS, PS & DIM models where applicable.

⁴ Labor options must be pre-approved by OSPI. Any labor option or cost that is not pre-approved will not be eligible for reimbursement.

⁵ ICETRON Lamp Warranty Period allows up to 8760 hrs per year (continuous operation).

⁶ Contact OSRAM SYLVANIA for detailed specifications of METALARC® lamps.

⁷ QUICKTRONIC MH ballasts warranty is 36 or 60 months, depending on maximum case temperature. Refer to product specifications for details. Electronic HID system warranty period is based on a minimum cycle of 10hr/start up to a maximum operation of 6,000 hours/year.

⁸ Maximum Case Temperature <70°C, for normal environmental operating conditions (40°C max. ambient) unless noted.

Refer to product specifications for details.

⁹ QUICKTRONIC T8 High Ambient (HT) Series

TERMS AND CONDITIONS

SYLVANIA lamps and QUICKTRONIC ballasts must be installed together as a system and be installed and operated under suitable environmental conditions and in accordance with the latest National Electrical Code, Underwriters Laboratory Bulletins, and ANSI Specifications. **This warranty will not apply in the event of conditions demonstrating abnormal use or stress, such as operating temperatures in excess of maximum rated temperatures, under/over voltage conditions, excessive switching cycles (see above Note #1) or operating hours, dirty or cracked sockets, or improper lamp or ballast installation.** Replacement of SYLVANIA lamps with lamps of other manufacturers will void the lamp portion of this warranty. Replacement of the QUICKTRONIC ballast with any other ballast will void the entire warranty.

WARRANTY ACTIVATION / SERVICE CLAIMS

The QUICK 60+ warranty is automatically activated after OSPI receives a completed QUICK 60+ warranty registration form within 30 days after installation. An acknowledgment will be sent for each registration along with a reference number for future correspondence. Service claims can be made by contacting 1-800-LIGHTBULB to initiate the process for problem resolution.

LABOR OPTIONS (Ballast and ICETRON lamps only)

No labor allowance is made for any lamp replacement except ICETRON, during the warranty period. OSPI provides for several labor options for service under the QUICK 60+ warranty program.

- OSPI will provide full service coverage through SYLVANIA LIGHTING SERVICES at no cost to the user of the ballast, or
 - OSPI will contact a service provider and coordinate replacement at no cost to the user of the ballast, or
 - OSPI will reimburse the purchaser reasonable, customary and necessary labor charges required to install the ballast replacement.
- 4. Labor options must be pre-approved by OSPI. Any labor option or cost that is not pre-approved will not be eligible for reimbursement.**

RETURN OF DEFECTIVE PRODUCT

After contacting OSRAM SYLVANIA and receiving a return AUTHORIZATION NUMBER, the user shall promptly return the product at the user's expense to OSRAM SYLVANIA after receiving instructions as to if, when and where to ship product. Failure to follow this procedure shall void this warranty.

REPLACEMENT OF PRODUCT, LIMITS OF LIABILITY

The foregoing shall constitute the sole and exclusive remedy of the purchaser and the sole and exclusive liability of OSPI. NO WARRANTY OF MERCHANTABILITY OR FITNESS FOR A PARTICULAR PURPOSE IS MADE OR IS TO BE IMPLIED. OSPI will not, under any circumstance, whether as a result of breach of contract or warranty, tort, or otherwise, be liable for any incidental, special or consequential damages, including lost profits or revenues or any other costs or damages.

OSPI reserves the right to examine all failed lamps and/or ballasts and reserves the right to be the sole judge as to whether any lamps and/or ballasts are defective and covered under this warranty.

©2007 OSRAM SYLVANIA

QUESTIONS?

Please call customer service at 1-800-654-0089 or contact your local OSRAM SYLVANIA representative.



Registration Form

Subject to change without notice.

Photocopy the form below and use it to register any installation featuring QUICKTRONIC[®] ballast systems. Also available, is our on-line version which you may find by visiting our web site at www.sylvania.com. The warranty coverage begins from the date of installation, but you must register an installation in order to receive warranty service.

Installation Information

Location Name: _____

Address: _____ City: _____ State: _____ Zip: _____

Send Registration To: _____

Address: _____ City: _____ State: _____ Zip: _____

Contact Name: _____ Phone: _____

Email: _____

Operating Hours: _____ hours/day _____ days/year Installation Date: _____

Occupancy Sensors: Yes No

Comments _____

Type & Quantities (Description and NAED Item # as Shown on label (or packaging))

Ballast Description	NAED Item #	Quantity	Lamp Description	NAED Item #	Quantity	Comments
<i>e.g. QTP2X32T8/UNV ISN-SC</i>	<i>49943</i>	<i>800</i>	<i>FO32/830/XP/ECO</i>	<i>21759</i>	<i>1600</i>	

Please Complete and Return To:
OSRAM SYLVANIA
Attn: Warranty Dept.
18725 N. Union Street, Westfield, IN 46074
Tel #: 800/654-0089 Email: warranty.service@sylvania.com

Or Complete and Fax To:
OSRAM SYLVANIA
Fax #: 866/632-9674
Also available, is our on-line version which you may find by visiting our web site at www.sylvania.com.