

**IMPORTANT SAFETY INFORMATION. READ AND FOLLOW ALL SAFETY INSTRUCTIONS.** Follow label information and instructions concerning Wet or Damp Locations, installation near combustible materials, insulation, building materials, and proper lamping. Do not install in areas subject to combustible vapors or gases. Before wiring to power supply and during servicing or relamping, turn off power at fuse or circuit breaker. **All servicing or relamping must be performed by qualified service personnel. Product must be grounded to avoid potential electric shock or other potential hazard. Product must be mounted in locations and at heights and in a manner consistent with its intended use, and in compliance with the National Electrical Code and local codes.** The use of accessory equipment not recommended by the manufacturer or installed contrary to instructions may cause an unsafe condition. Do not block light emanating from product in whole or part, as this may cause an unsafe condition. Do not allow items such as drapes, curtains, screens or the like to come into contact with the product or to block light from the product, as this may cause an unsafe condition.

## INSTALLATION INSTRUCTIONS

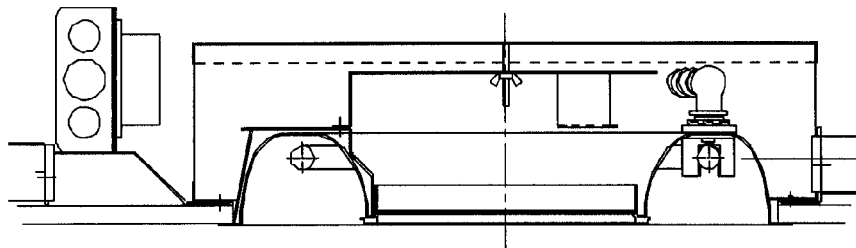
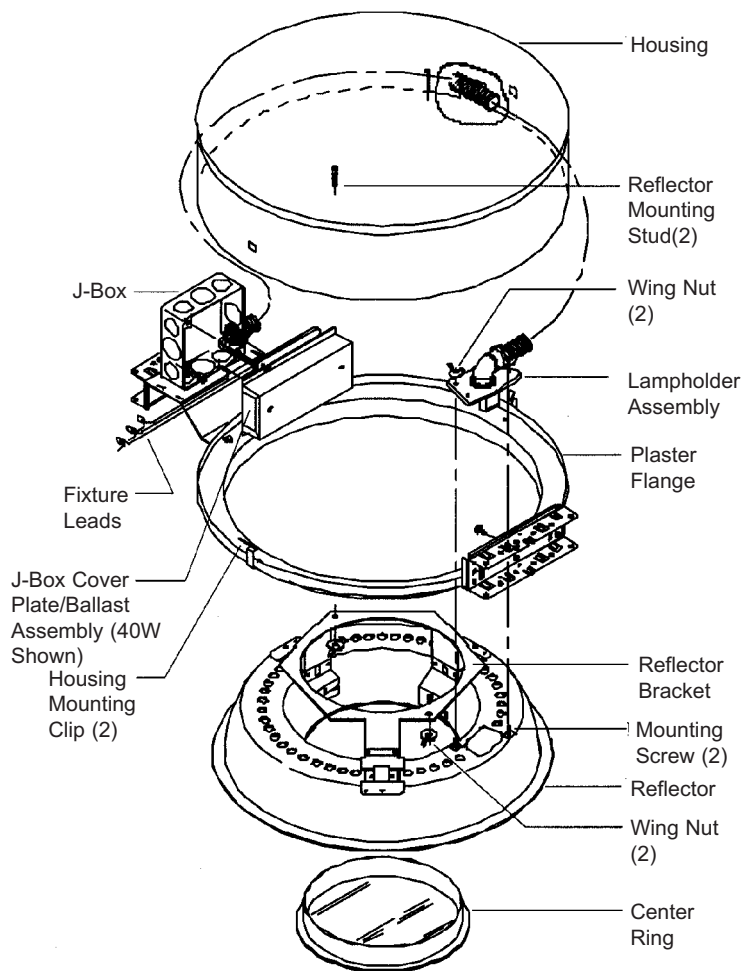
### LT555REBCCEA 120/277V & LT540REBCCEA 120/277V

**CAUTION: TO REDUCE THE RISK OF ELECTRICAL SHOCK MAKE CERTAIN THAT THE POWER IS OFF BEFORE INSTALLING OR SERVICING THIS FIXTURE.**

- BEFORE INSTALLING THE FIXTURE IT IS NECESSARY TO REMOVE THE REFLECTOR FROM THE HOUSING AND THE LAMPHOLDER ASSEMBLY FROM THE REFLECTOR. FIRST REMOVE THE CENTER RING FROM THE REFLECTOR BY ROTATING THE RING COUNTERCLOCKWISE. REMOVE THE REFLECTOR FROM THE HOUSING BY REMOVING TWO WING NUTS INSIDE THE HOUSING. REMOVE THE LAMPHOLDER ASSEMBLY FROM THE REFLECTOR BY REMOVING TWO WING NUTS ON TOP OF THE REFLECTOR PLATE.
- INSTALL THE HOUSING PER INSTRUCTION SHEET #463, PROVIDED.
- REMOVE J-BOX COVER PLATE. REMOVE APPROPRIATE KNOCKOUT AND ASSEMBLE APPROPRIATE CONNECTOR FOR THE SUPPLY WIRE USED. CONNECT GROUND WIRES TO GREEN GROUND LEADS. CONNECT WHITE (COMMON) TO WHITE (LEADS). CONNECT POWER SUPPLY (LINE) TO BLACK LEAD(S). REINSTALL J-BOX COVER.

**WARNING: DO NOT pinch wires between J-Box/ ballast cover and J-Box. Consult a Qualified Electrician for all other options that require other wiring configurations.**

- RE-INSTALL THE LAMPHOLDER ASSEMBLY ON TOP OF THE REFLECTOR BY PLACING THE REFLECTOR PLATE OVER THE TWO MOUNTING SCREWS ON THE REFLECTOR. REPLACE AND TIGHTEN THE TWO WING NUTS TO SECURE THE LAMPHOLDER ASSEMBLY TO THE REFLECTOR.
- RE-INSTALL THE REFLECTOR IN THE HOUSING BY PLACING THE REFLECTOR BRACKET OVER THE TWO STUDS INSIDE THE HOUSING. REPLACE AND TIGHTEN THE TWO WING NUTS TO DRAW THE REFLECTOR FLANGE UP AGAINST THE FINISHED CEILING.
- INSTALL THE PROPER LAMP FOR THE FIXTURE BEING INSTALLED, 40W OR 55W T5 4-PIN CIRCLINE LAMP, (BY OTHERS).
- INSTALL ACCESSORY LENS OR LOUVER, (SUPPLIED SEPARATELY) AND RETAIN BY REPLACING THE CENTER RING.



Install the lamp by pressing the pins on the lamp into the lampholder and the lamp into the three lamp supports.



® 101 Corporate Drive • Spartanburg, SC 29303  
With representatives offices in principal cities throughout North America.  
Copyright 2005, 08/05 revision, All Rights Reserved - Printed in U.S.A.